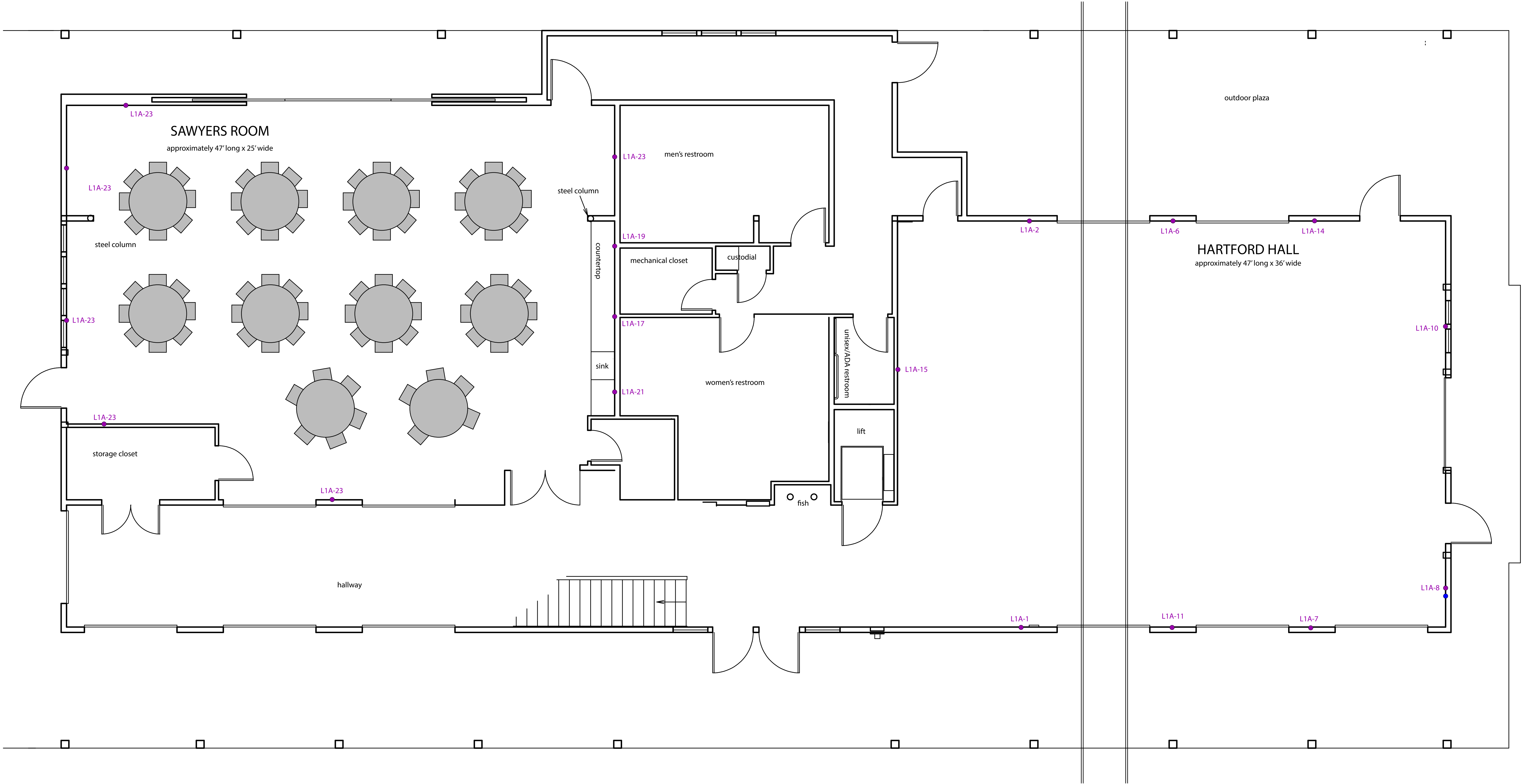



The Mill Sawyers Room round tables and chairs layout - FURNITURE CONFIGURATION IS FOR OCCUPANCY USE ONLY AND NOT SET UP BY STAFF



A Sawyers Room rental comes with 75 chairs, 12 5' rounds and 18 6' long tables.

OCCUPANCY REQUIREMENTS - MAX OF 75 CHAIRS WITH 10 5' ROUND TABLES.

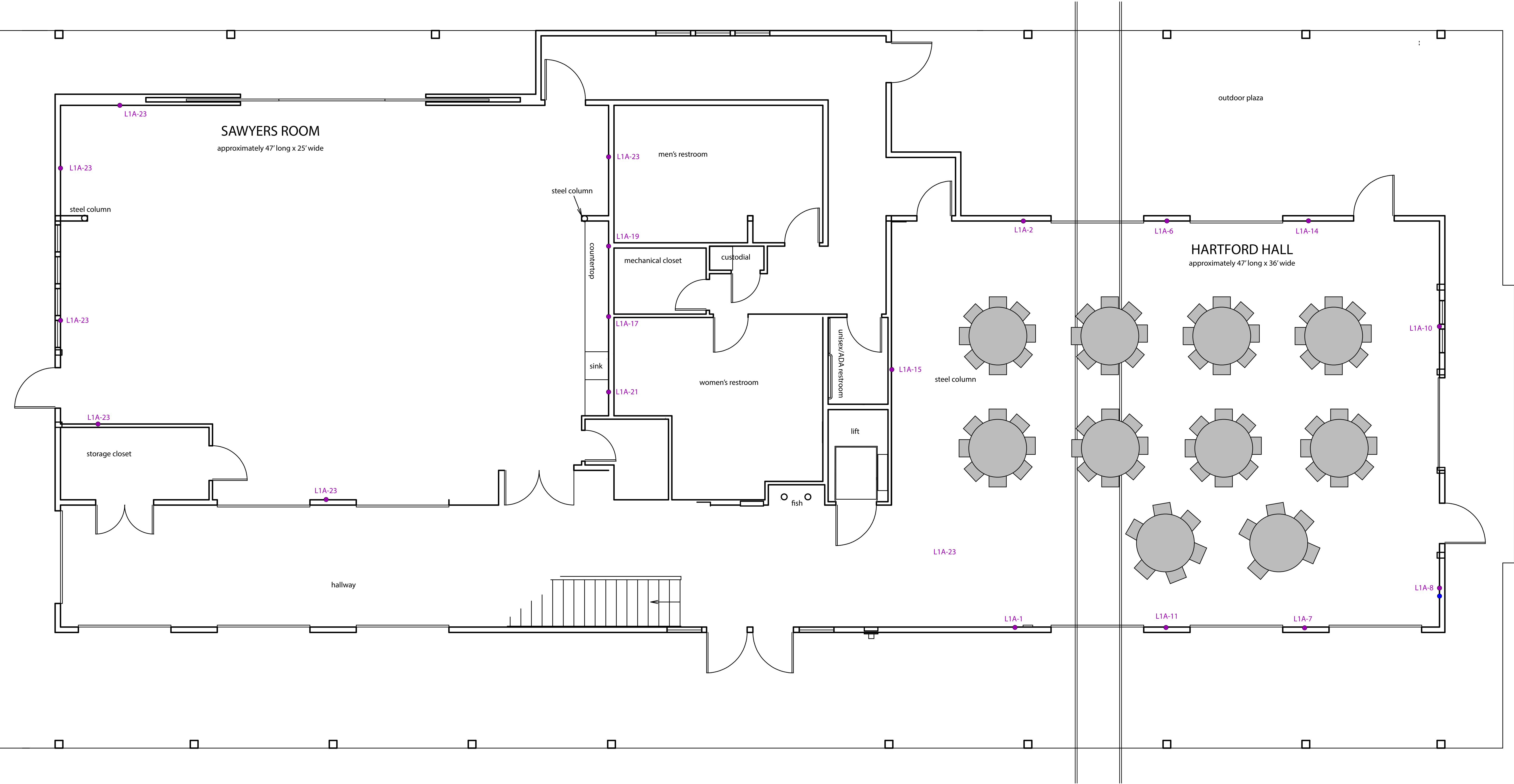
scale 1" = 4'



A horizontal scale bar with a vertical line at the left end. Below the bar are four double-headed arrows, each labeled with a number from 1 to 4, representing feet.

- = standard electrical outlet (same circuit indicated by name; 20-amps/circuit)
- = 30-amp 240 volt outlet (three prong)

The Mill Harford Hall round tables and chairs layout - FURNITURE CONFIGURATION IS FOR OCCUPANCY USE ONLY AND NOT SET UP BY STAFF



A Hartford Hall rental comes with 75 chairs, 12 5' rounds and 18 6' long tables.

OCCUPANCY REQUIREMENTS - MAX OF 75 CHAIRS WITH 10 5' ROUND TABLES.

scale 1" = 4'

- = standard electrical outlet (same circuit indicated by name; 20-amps/circuit)
- = 30-amp 240 volt outlet (three prong)

The Mill Harford Hall long tables and chairs layout - FURNITURE CONFIGURATION IS FOR OCCUPANCY USE ONLY AND NOT SET UP BY STAFF



A Hartford Hall rental comes with 75 chairs, 12 5' rounds and 18 6' long tables.

OCCUPANCY REQUIREMENTS - MAX OF 75 CHAIRS WITH 14 6' LONG TABLES.

- scale 1" = 4'
-
- = standard electrical outlet (same circuit indicated by name; 20-amps/circuit)
 - = 30-amp 240 volt outlet (three prong)

The Mill Harford Hall chairs layout - FURNITURE CONFIGURATION IS FOR OCCUPANCY USE ONLY AND NOT SET UP BY STAFF



A Hartford Hall rental comes with 75 chairs, 12 5' rounds and 18 6' long tables.

OCCUPANCY REQUIREMENTS - MAX OF 75 CHAIRS.

- scale 1" = 4'
-
- = standard electrical outlet (same circuit indicated by name; 20-amps/circuit)
 - = 30-amp 240 volt outlet (three prong)

The Mill full rental Harford Hall chairs layout - FURNITURE CONFIGURATION IS FOR OCCUPANCY USE ONLY AND NOT SET UP BY STAFF



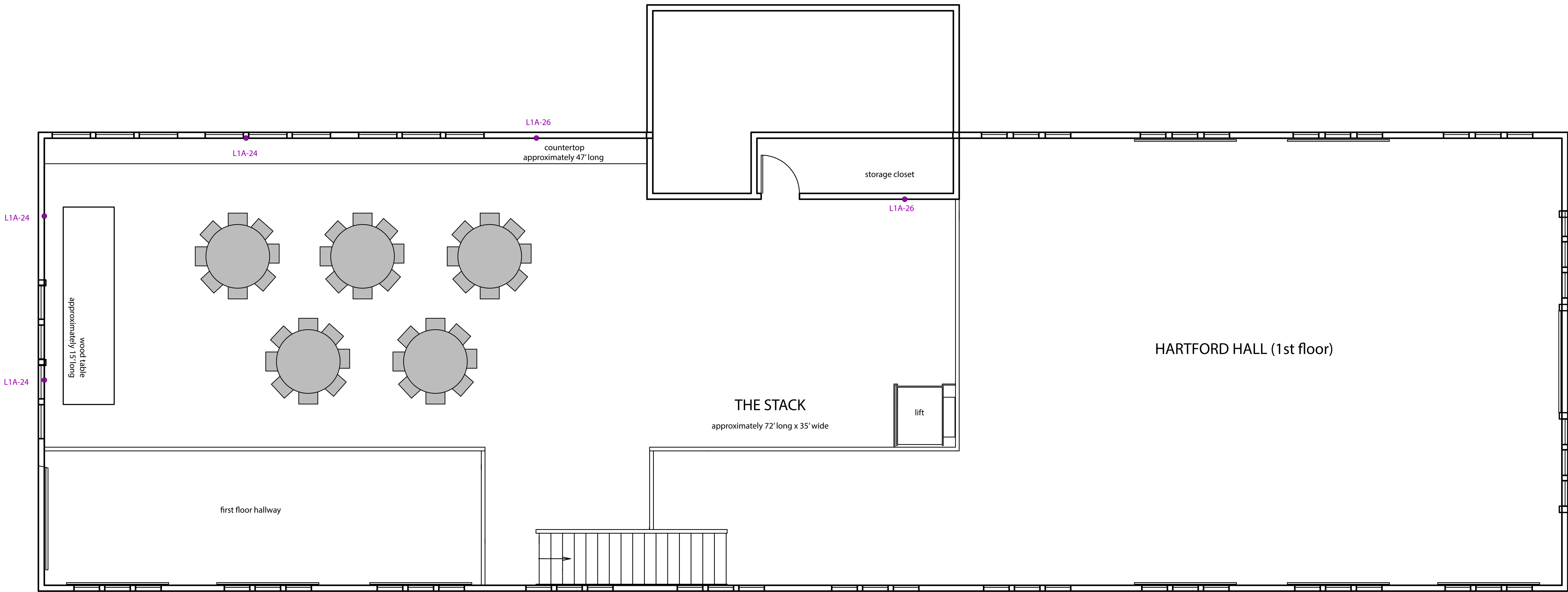
A full Mill rental comes with 115 chairs, 17 5' rounds and 23 6' long tables.

OCCUPANCY REQUIREMENTS - MAX OF 115 CHAIRS.

scale 1" = 4'

- = standard electrical outlet (same circuit indicated by name; 20-amps/circuit)
- = 30-amp 240 volt outlet (three prong)

The Mill The Stack (2nd floor) round tables and chairs layout - FURNITURE CONFIGURATION IS FOR OCCUPANCY USE ONLY AND NOT SET UP BY STAFF



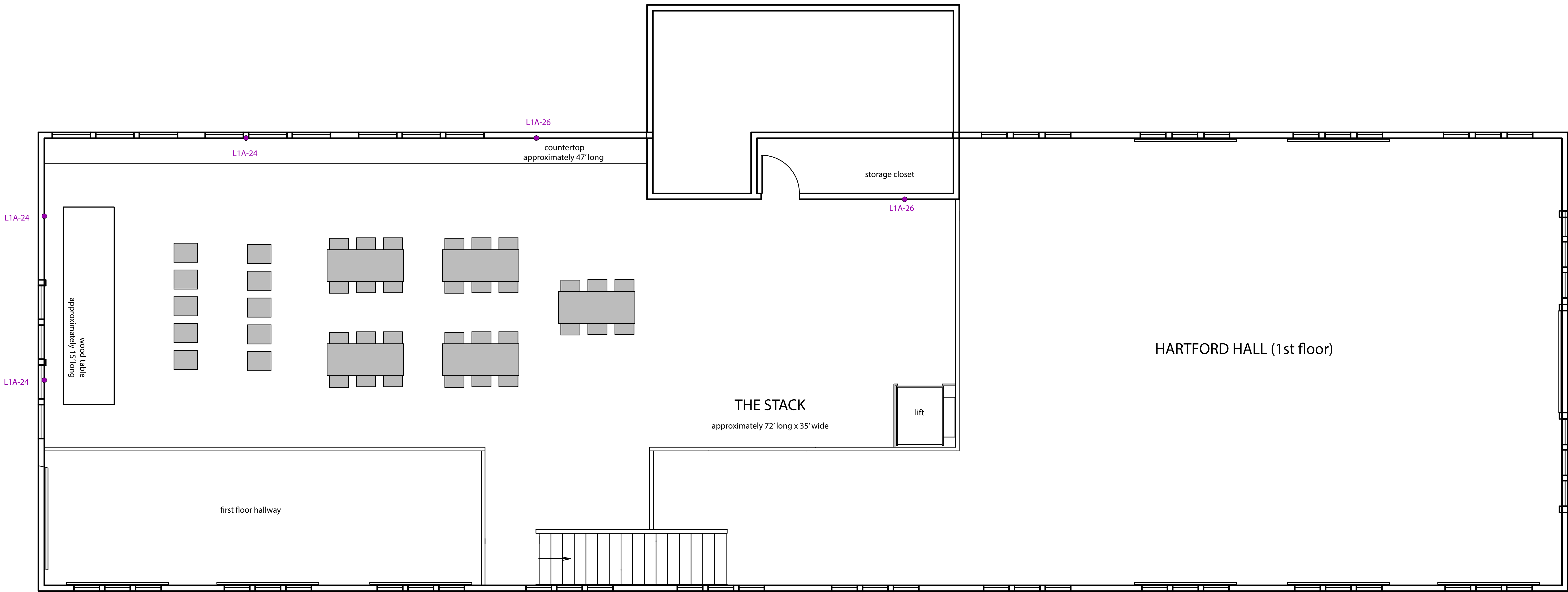
scale 1" = 4'

● = standard electrical outlet (same circuit indicated by name; 20-amps/circuit)
(outlets are below the countertop)

A Stack rental comes with 40 chairs, 5 5' rounds and 5 6' long tables.

OCCUPANCY REQUIREMENTS - MAX 48 PEOPLE

The Mill The Stack (2nd floor) long tables and chairs layout - FURNITURE CONFIGURATION IS FOR OCCUPANCY USE ONLY AND NOT SET UP BY STAFF



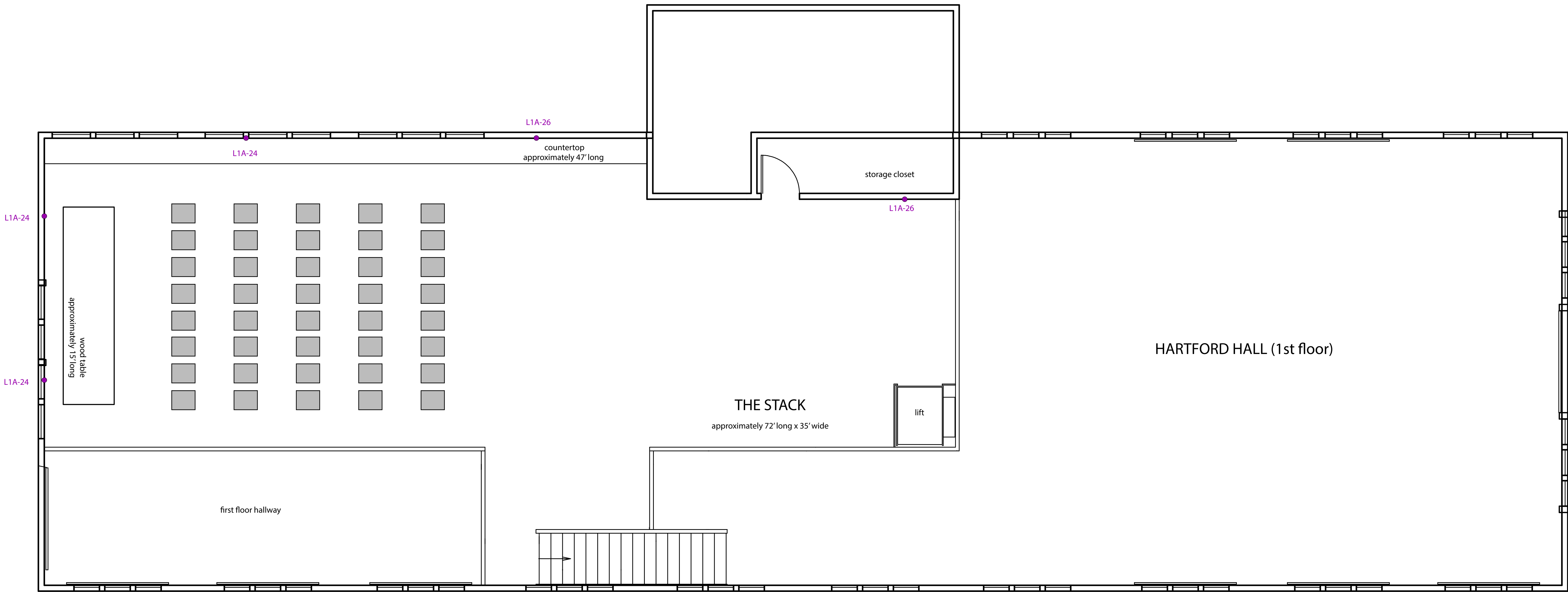
scale 1" = 4'

• = standard electrical outlet (same circuit indicated by name; 20-amps/circuit)
(outlets are below the countertop)

A Stack rental comes with 40 chairs, 5 5' rounds and 5 6' long tables.

OCCUPANCY REQUIREMENTS - MAX 48 PEOPLE

The Mill The Stack (2nd floor) chairs layout - FURNITURE CONFIGURATION IS FOR OCCUPANCY USE ONLY AND NOT SET UP BY STAFF



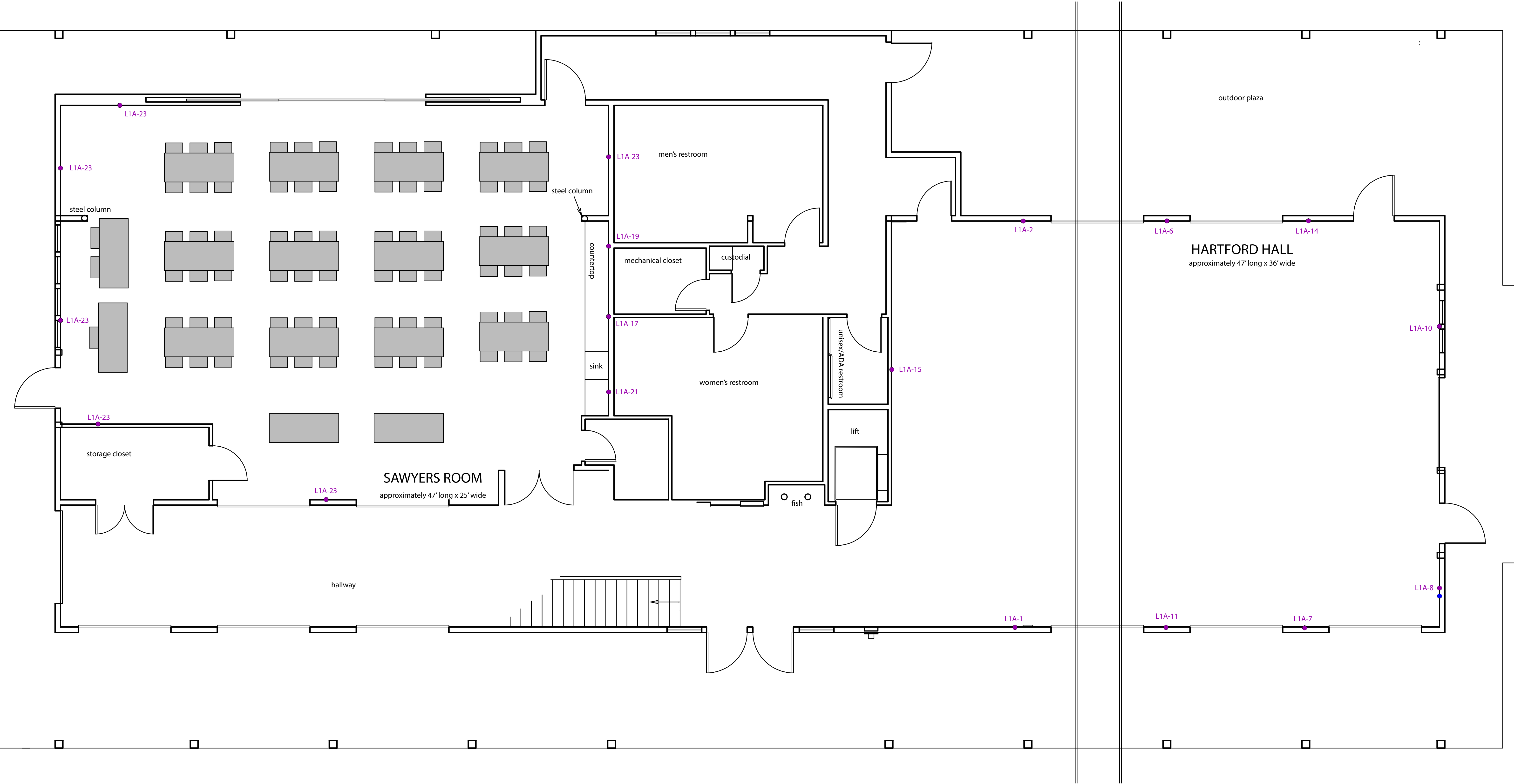
scale 1" = 4'

• = standard electrical outlet (same circuit indicated by name; 20-amps/circuit)
(outlets are below the countertop)

A Stack rental comes with 40 chairs, 5 5' rounds and 5 6' long tables.

OCCUPANCY REQUIREMENTS - MAX 48 PEOPLE

The Mill Sawyers Room long tables and chairs layout - FURNITURE CONFIGURATION IS FOR OCCUPANCY USE ONLY AND NOT SET UP BY STAFF

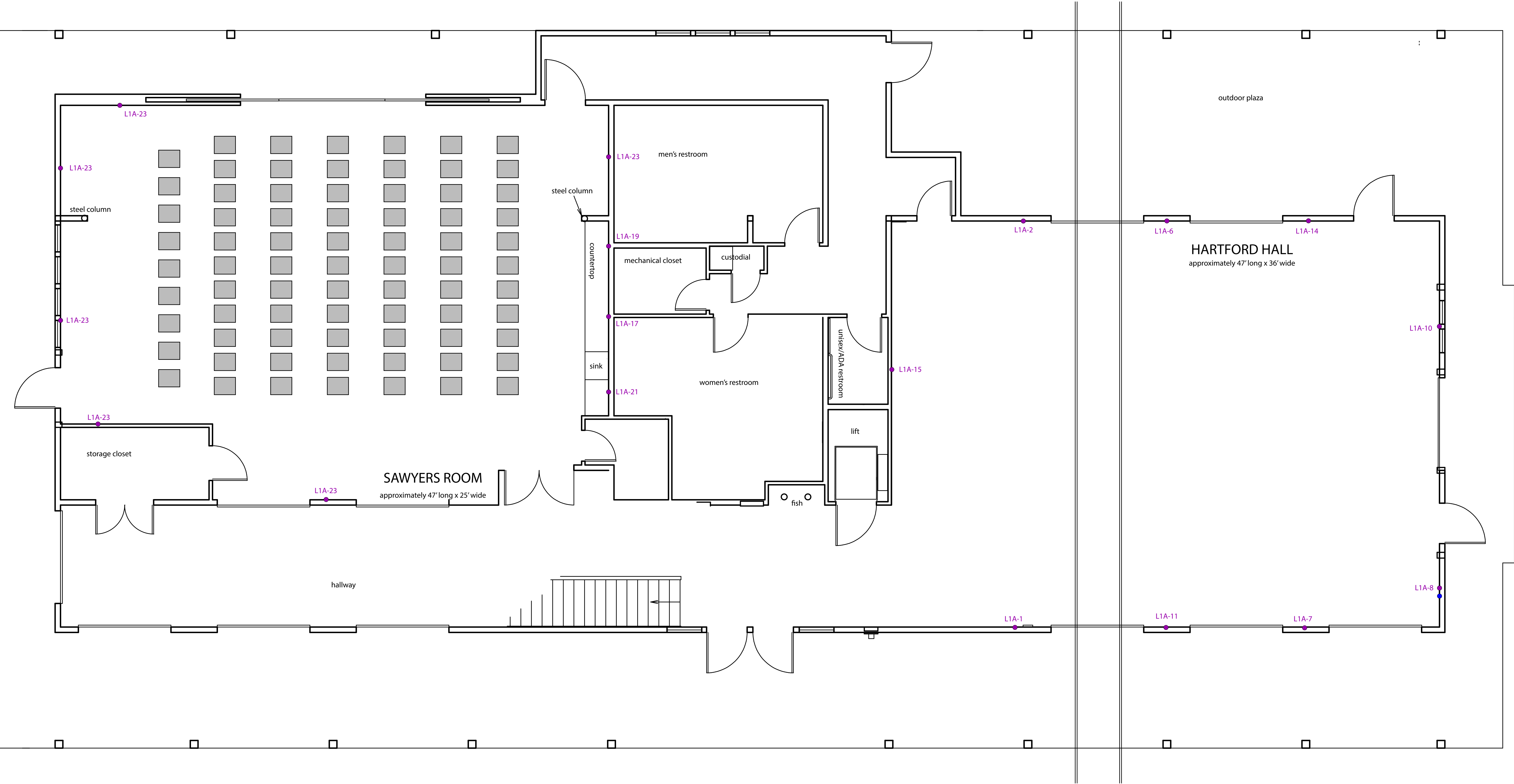


A Sawyers Room rental comes with 75 chairs, 12 5’ rounds and 18 6’ long tables.

OCCUPANCY REQUIREMENTS - MAX OF 75 CHAIRS WITH 16 6’ LONG TABLES.

- scale 1" = 4'
-
- = standard electrical outlet (same circuit indicated by name; 20-amps/circuit)
- = 30-amp 240 volt outlet (three prong)

The Mill Sawyers Room chairs layout - FURNITURE CONFIGURATION IS FOR OCCUPANCY USE ONLY AND NOT SET UP BY STAFF



A Sawyers Room rental comes with 75 chairs, 12 5' rounds and 18 6' long tables.

OCCUPANCY REQUIREMENTS - MAX OF 75 CHAIRS.

- scale 1" = 4'
-
- = standard electrical outlet (same circuit indicated by name; 20-amps/circuit)
 - = 30-amp 240 volt outlet (three prong)