

Water Quality Issues in the Lake Stevens area

- **Changes in the lake basin or watershed mean changes in our lake and streams.**
- **The stormwater system does not treat our runoff.**
- **Lawn maintenance chemicals wash into the stormwater system and into the lake.**

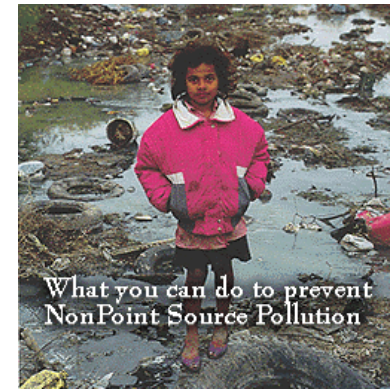


- **Water fowl leave fecal contamination in our lake. Don't feed the birds.**
- **Pet waste washes into our lake and streams through the stormwater system. Scoop it often and dispose of it properly.**

What can you do to improve water quality?

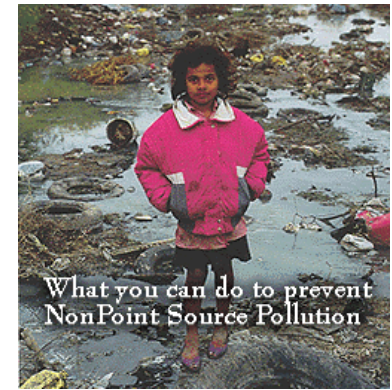
Washing your car

- ✓ Use biodegradable soap. Many cleaning products contain phosphates and other chemicals that can make fish and other wildlife sick.
- ✓ Park your car on gravel or lawn so wastewater doesn't flow into the stormwater system.
- ✓ Wash your car in sections and quickly rinse it using a high pressure nozzle.



What can you do to improve water quality?

Avoid introducing pollutants into the stormwater system



- ✓ Use solvents only when necessary and only the amount needed. More is not better!
- ✓ Clean up spills immediately (wear protective clothing and gloves).
- ✓ Never flush chemicals or solvents down the toilet or pour them onto the ground or in the storm drain.
- ✓ Dispose of used oil and other chemicals in a safe manner. Take products to hazardous waste collection centers. There is one in Everett.



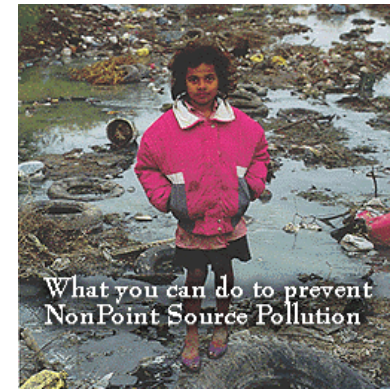
Did you know that one gallon of used motor oil can ruin one million gallons of fresh water – that's a year's supply of water for 50 people.



What can you do to improve water quality?

Fertilizing the lawn

- ✓ Use native grasses that do not need to be fertilized.
- ✓ Test your soil to determine what nutrients the lawn needs.
- ✓ Apply fertilizer only when needed, during the right season and in proper amounts. Do not fertilize if a heavy storm is predicted.
- ✓ Do not fertilize on sidewalks or driveways where it can be washed into the stormwater system.



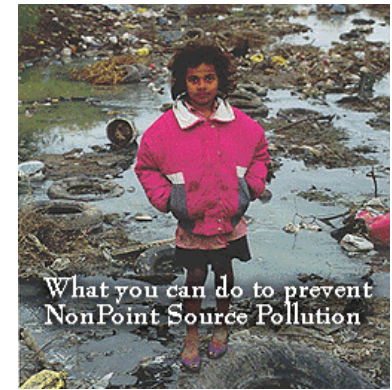
What can you do to improve water quality?

Properly dispose of pet waste

- ✓ Flush it down the toilet – Waste will be treated at the local sewage treatment plant.
- ✓ Bury it in your yard – Dig a hole or trench that is about 5 inches deep. Stay away from gardens, ditches, wells, lakes or streams. Don't add pet waste to your compost pile!



✓ Put it in the trash – Not the best method because the waste will end up in a landfill and can still cause pollution problems, but definitely better than leaving it on the ground. Waste should be double bagged and not more than 10 lbs per week in your residential garbage.



What is the City doing to improve water quality?

Regular Maintenance of Stormwater Facilities

- ✓ Street Sweeping
- ✓ Vactoring Catchbasins
- ✓ Detention Pond Maintenance
- ✓ Invasive Species Removal at Ponds



This Oil/Water Separator was installed on Main Street during street improvements.



It treats the runoff before it enters the lake.

